

INVISIO R30

Wireless Remote PTT

USER MANUAL

Contents

Disclaimer	4
Overview	6
Attachment	7
PTT Assignment	8
Examples	9
Pairing	10
Extended Pairing	11
Troubleshooting	13

How to Disable/Enable R30	14
Power Saving Mode	15
Storage and Maintenance	16
Glossary of Terms	17
Regulatory	18
Notes	21

Disclaimer

The information in this INVISIO User Manual (the "User Manual") is subject to change without notice and INVISIO is under no obligation to provide the user with updates, amendments or modifications.

This User Manual describes the use of the INVISIO System (the "Product") which includes headset, control unit, cables and accessories.

EXCEPT WHERE PROHIBITED BY LAW, THE WARRANTY EXPRESSLY GRANTED AS A PART OF INVISIO'S GENERAL TERMS AND CONDITIONS FOR DELIVERY, AS TO PERFORMANCE, RESULT, OR OTHERWISE IS THE USER'S EXCLUSIVE WARRANTY REMEDY.

INVISIO EXPRESSLY DISCLAIMS, AND USER EXPRESSLY WAIVES, ALL OTHER WARRANTIES, DUTIES, AND OBLIGATIONS IMPLIED IN LAW, INCLUDING THE IMPLIED WARRANTY OF MERCHANTABILITY, FITNESS FOR A PARTICULAR PURPOSE OR OTHER WARRANTY OF QUALITY, OR THOSE ARISING FROM A COURSE OF DEALING, CUSTOM, OR USAGE OF TRADE, EXCEPT OF TITLE AND AGAINST PATENT INFRINGEMENT. THE REMEDIES SET FORTH HEREIN ARE EXCLUSIVE.

By assembling and/or using the Product, the user agrees that he or she has read and understood the entire User Manual, including, without limitation, all instructions and warnings contained herein, prior to using the Product. The user also agrees that he or she will ensure that any additional or subsequent user of the Product will read, understand, and comply with the User Manual, including, without limitation, all instructions and warnings contained therein, prior to allowing that person to use the Product. The Product is designed exclusively for use by trained, professional personnel ("Authorized Personnel") performing their duties in their official capacity. Under no circumstances should the Product be used in any manner other than that described in this User Manual.

Opening or otherwise tampering with one or more of the control units, headsets, or accessories voids any warranty. Only original, manufacturer-approved accessories and batteries may be used with the Product.

The user must activate, adjust, clean, and maintain the Product in accordance with this User Manual. Failure to activate, adjust, clean, and maintain the Product in accordance with this User Manual voids any warranty. In consideration of receiving the Product, the user hereby agrees to the fullest extent permitted by law, as follows:

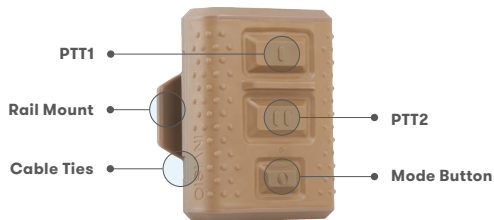
THE USER WAIVES ANY AND ALL CLAIMS AGAINST INVISIO AND ALL RELATED PARTIES RESULTING FROM USE OF THE USER MANUAL, THE PRODUCT, AND/OR ANY OF ITS COMPONENTS. IN NO EVENT WILL INVISIO OR ITS RELATED PARTIES BE LIABLE FOR DIRECT, INDIRECT, SPECIAL, INCIDENTAL, OR CONSEQUENTIAL DAMAGES ARISING OUT OF THE USE OR INABILITY TO USE THE USER MANUAL OR THE PRODUCT.

The user releases INVISIO and all related parties from any and all liability for any loss, damage, injury, or expense that the user may suffer, as a result of the use of the User Manual or Product, due to any cause whatsoever, including, without limitation: strict liability, misrepresentation, negligence, gross negligence, or breach of contract on the part of INVISIO and all related parties in the design or manufacture of the Product and any of its components.

In the event of the user's death or incapacity, all provisions contained herein shall be effective and binding upon the user's heirs, next of kin, executors, administrators, beneficiaries, assigns and representatives (the "User's Representative").

In any event, INVISIO's liability to any user or User's Representative for any reason and upon any cause of action or any claim in contract, tort, or otherwise with respect to the User Manual or the Product shall be limited to the price paid to INVISIO for the unit that caused any alleged damage. No cause of action which accrued more than one (1) year prior to the filing of a suit alleging such cause of action may be asserted against INVISIO or any party which designed or manufactured any component of the Product. All parties waive to the fullest extent permitted by law any right to a trial by jury as to any claims relating or referring in any way to the Product including, without limitation, any claims based in strict liability, negligence, gross negligence, breach of warranty, and any other claim based in law or equity.

Overview



INVISIO R30

The INVISIO R30 wireless PTT enables remote keying of the Gen II V-Series control units. It mirrors the key combos and modes of the control units and comes with rail mount, as well as cable ties. It uses the Bluetooth Low Energy (BLE) protocol for communication and up to seven R30's can be paired to a single control unit. The INVISIO R30 is submersible to 2 meters and has a battery lifetime of up to 2 years.

Attachment



R30 remote PTT with rail mount

1. attach the remote PTT onto the weapon's rail mount.



R30 remote PTT with cable ties

1. Remove the rail mount holder by unscrewing it.
2. Insert mounting strap through the remote PTT.
3. Position PTT where required and secure strap.



Single radio

PTT buttons are assigned according to cable settings.



Multiple net radios

PTT buttons are assigned according to cable settings.



Intercom

Intercoms are supported by use of appropriate intercom cables for the control unit. PTT buttons are assigned according to cable settings.

Note

PTT button assignment is dependent on the individual cable settings and the amount of connected devices to the control unit.

Please consult your radio datasheet and control unit user guide for more information or consult your INVISIO representative.

COM Port	Radio Configuration	PTT Assignment
----------	---------------------	----------------

Example 1

COM1	Single net radio	PTT1
COM2	-	-
COM3	-	-

Example 2

COM1	Single net radio	PTT1
COM2	Single net radio	PTT2
COM3	-	-

Example 3

COM1	Dual net radio Net1 Dual net radio Net2	PTT1 PTT2
COM2	-	-
COM3	-	-

Example 4

COM1	Dual net radio Net1 Dual net radio Net2	PTT1 -
COM2	Single net radio	PTT2
COM3	-	-

Example 5

COM1	Single net radio	PTT1
COM2	Intercom	PTT2
COM3	-	-

Pairing

Pairing of remote PTT

1. Place the R30 in near proximity to the control unit.
2. Turn the control unit off by disconnecting the radio cables or power supply device.
3. Connect the headset and put it on.
4. Press and hold control unit PTT1.
5. Turn the control unit on.
6. Release control unit PTT1.
7. You will receive a voice prompt, "PTT pairing mode initiated". A 60 second pairing window now starts.
8. Turn the R30 remote on by making a short button push.
9. After 3 seconds the R30 is ready to pair. Now, make four short PTT1 button pushes on the R30.
10. You will receive a voice prompt – either: "PTT Pairing Successful" or "PTT Pairing Failed".
11. Push PTT1 on the control unit to exit pairing.

Repeat steps to pair another R30 or in case the pairing failed.

- To cancel pairing mode - press PTT1 on the control unit.
- To remove all pairing from the control unit: Press and hold the mode button, short press PTT1, PTT2, PTT1, PTT2 and then release mode button.

Caution

- Pairing multiple control systems simultaneously may result in an incorrect R30 being paired to the control unit.
- The control unit cannot be operated during the pairing sequence.

Extended Pairing

Extended pairing

Extended pairing allows two wireless, remote PTTs to work together (any combination of the R30 Single Button and the R30).

1. Place the remote PPT in near proximity to the control unit.
2. Turn the control unit off by disconnecting the radio cables or power supply device.
3. Connect the headset and put it on.
4. Press and hold control unit PTT1.
5. Turn the control unit on.
6. Release control unit PTT1.
7. You will receive a voice prompt, "PTT pairing mode initiated". A 60 second pairing window now starts.
8. Turn the R30 remote on by making a short button push.
9. After 3 seconds the R30 is ready to pair. Now, make four short PTT1 button pushes on the R30 to enter pairing mode.
10. You will receive a voice prompt - either: "PTT pairing successful" or "PTT pairing failed".
11. If successfully paired, a 60 second extended pairing window starts. A new R30 remote can now be paired as an extension to the previously paired remote. Please repeat steps 8 through 9.
12. You will receive a voice prompt - either "Extended PTT pairing successful" or "extended PTT pairing failed"

Note

To cancel pairing or extended pairing mode press PTT1 on the control unit.
A maximum of 7 wireless, remote PTTs can be paired.

Extended pairing

Extended pairing allows two R30's to work together for a total of four designated PTT buttons. These can operate PTT1 through to PTT4 on the control unit.

COM Port	Radio Configuration	PTT Assignment
Example 1		
COM1	Single net radio	PTT1
COM2	-	-
COM3	-	-
Example 2		
COM1	Single net radio	PTT1
COM2	Single net radio	PTT2
COM3	Dual net radio Net1 Dual net radio Net2	PTT3 PTT4
Example 3		
COM1	Dual Net Radio Net1 Dual Net Radio Net2	PTT1 PTT2
COM2	-	-
COM3	Single net radio	PTT3
Example 4		
COM1	Dual net radio Net1 Dual net radio Net2	PTT1 PTT2
COM2	Single net radio	PTT3
COM3	Single net radio	PTT4
Example 5		
COM1	Single net radio	PTT1
COM2	Intercom	PTT2
COM3	Dual net radio Net1 Dual net radio Net2	PTT3 PTT4

Not sure of pairing status

If in doubt, please remove all pairing from the control unit:

1. Press and hold the mode button, short press PTT1, PTT2, PTT1, PTT2 and then release the mode button.

Perform the desired pairing according to the section "Pairing".

How to disable/enable R30



Disable/enable R30

The wireless PTT can be disabled (e.g. for security reasons) and enabled again via a key combination



Key combo

Use this key combo on the control unit to disable or enable R30 wireless operation:

1. Press and hold: Mode button
2. Short press: PTT1
3. Long press: PTT1
4. Release: All buttons



Voice prompt

You will receive a voice prompt - either:
Wireless PTT disabled
or
Wireless PTT enabled

R30 wireless operation

To disable R30:

No action needed. The R30 is automatically disabled 3 min. after the “Wireless PTT disabled”-voice prompt.

To enable R30:

Press any R30 button after the “Wireless PTT enabled”-voice prompt.

Power Saving Mode

Automatic power saving mode

Power saving mode occurs:

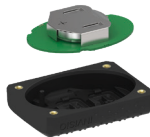
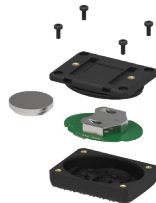
1. After 8 hours with no button presses.
2. 3 minutes after it has lost connection to the control unit.

Press any R30 button to power it on again. After a few seconds the R30 is connected to the control unit.

Changing battery

Battery change must be done in a dry and clean environment:

1. Remove backplate screws.
2. Separate backplate and housing.
3. Carefully remove the circuit board.
4. Change the battery. Please ensure correct battery orientation.



5. Put circuit board back in place.
Match the hole in the circuit board with the small guidance pin in the housing.
6. Screw the backplate on again.

Caution

INVISIO recommends that the battery should be changed in a clean and ESD safe environment. When attaching the backplate, make sure that the screws are properly tightened.

Storage and Maintenance



Protect from force

To avoid damaging the R30, store in a protected area without excess weight.



Dry and ventilated

Store the R30 in a dry and ventilated area.



Clean in fresh water

If the R30 becomes dirty or exposed to salt water, rinse in fresh water.

Glossary of Terms

PTT

Push-to-talk is used when transmitting during a 2-way radio communication. Pressing the PTT button enables transmission. Releasing enables monitoring.

PTT Mode

PTT Mode allows communication in both directions, but not simultaneously. When receiving, the user must wait for the signal to end, before begin transmitting.




ESD safe environment

An ESD safe environment is an environment where there is no risk of Electrostatic discharge (ESD) - a sudden flow of electricity between electrically charged objects caused by contact, an electrical short, or dielectric breakdown.


© 2022 INVISIO A/S

INVISIO is a registered trademark of INVISIO A/S
Stamholmen 157, 2650 Hvidovre, Denmark

Regulatory

	<p>This appliance complies with European and UK Directives 2014/35/EU, 2014/30/EU, 2011/65/EU (+ 2015/863/EU).</p>
	<p>This device is approved by Bluetooth SIG.</p>
	<p>FCC-ID: 2AUGTASM17582</p> <p>INVISIO Communications AS has not approved any changes or modifications to this device by the user. Any changes or modifications could void the user's authority to operate the equipment.</p> <p>INVISIO Communications AS n'approuve aucune modification apportée à l'appareil par l'utilisateur, quelle qu'en soit la nature. Tout changement ou modification peuvent annuler le droit d'utilisation de l'appareil par l'utilisateur.</p> <p>This device complies with Part 15 of the FCC Rules and Industry Canada licence-exempt RSS standard(s). Operation is subject to the following two conditions: (1) this device may not cause interference, and (2) this device must accept any interference, including interference that may cause undesired operation of the device.</p> <p>Le présent appareil est conforme aux CNR d'Industrie Canada applicables aux appareils radio exempts de licence. L'exploitation est autorisée aux deux conditions suivantes : (1) l'appareil ne doit pas produire de brouillage, et (2) l'utilisateur de l'appareil doit accepter tout brouillage radioélectrique subi, même si le brouillage est susceptible d'en compromettre le fonctionnement.</p> <p>This equipment complies with FCC and ISED radiation exposure limits set forth for an uncontrolled environment. The antenna should be installed and operated with minimum distance of 20 cm between the radiator and your body. This transmitter must not be co-located or operating in conjunction with any other antenna or transmitter.</p>

Regulatory

	<p>Cet appareil est conforme aux limites d'exposition aux rayonnements de l'ISDE pour un environnement non contrôlé. L'antenne doit être installée de façon à garder une distance minimale de 20 centimètres entre la source de rayonnements et votre corps. L'émetteur ne doit pas être colocalisé ni fonctionner conjointement avec à autre antenne ou autre émetteur.</p> <p>This equipment has been tested and found to comply with the limits for a Class B digital device, pursuant to part 15 of the FCC Rules. These limits are designed to provide reasonable protection against harmful interference in a residential installation. This equipment generates, uses and can radiate radio frequency energy and, if not installed and used in accordance with the instructions, may cause harmful interference to radio communications. However, there is no guarantee that interference will not occur in a particular installation. If this equipment does cause harmful interference to radio or television reception, which can be determined by turning the equipment off and on, the user is encouraged to try to correct the interference by one or more of the following measures:</p> <ul style="list-style-type: none"> - Reorient or relocate the receiving antenna. - Increase the separation between the equipment and receiver. - Connect the equipment into an outlet on a circuit different from that to which the receiver is connected. - Consult the dealer or an experienced radio/TV technician for help.
<p>IC</p>	<p>This Class B digital apparatus complies with Canadian ICES-003.</p> <p>Cet appareil numérique de classe B est conforme à la norme canadienne NMB-003.</p> <p>IC: 25405-ASM17582</p>
	<p>This device complies with RCM rules.</p>



www.invisio.com

CUP18453-2
ART33529-2

INVISIO[®]